

WASCH

TIMER RELAY

REGTIME10-12

Made in Russia

The relay is intended for 12V DC commutation. It is used for turning the additional devices ON according to the diagrams (pict.2)

Choice of time unit (seconds, minutes, hours) is possible. Operation modes, time units, time duration may be programmed by the button through the opening in the relay case.

Installed LED and semi-transparent case provide visual control.

Application is universal.

Technical characteristics:

Nominal Voltage:12V
Switching current, not more:200A
Consumption current, not more:550mA
Operation time, T1 (T2):(0-600)s/min/hour
Number of cycles T1 (T2):(0-600)/∞
Weight, not more:0,1kg
Dimensions:77x45x45mm
Connection clamps:M6
IP protection:IP54

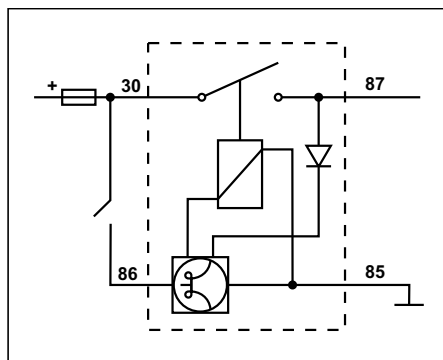
OPERATION MANUAL

1 Adjustment

- 1.1. Extract a cap out of the relay case to reach the button.
- 1.2. Supply power on the relay ("85"- "minus", "86"- "plus"). The relay starts operation in preset operation mode.
- 1.3. Adjust relay parameters with the help of the button according to the diagram (Pict.3).
- 1.4. Place the cap back..

2 Connection

- 2.1. Connect the relay according to the scheme (Pict.1).
- 2.2. At the supplied power the relay starts operation in pre-set operation mode according to the diagram (Pict.2).



Pict.1

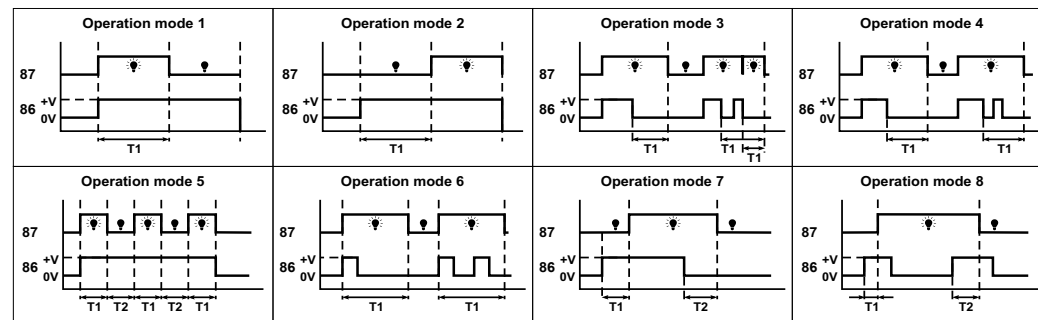


Рис.2

Time units and number of cycles are setup in seconds

- * - short pressing of the button <3s
- *** - the button is pushed for a long time
- ☀ - the LED is lighting constantly
- ⊛ - the LED is twinkling constantly
- N⊛ - the LED twinkles N times
- ⊛ - release of the button
- T1 - ON condition time
- T2 - OFF condition time

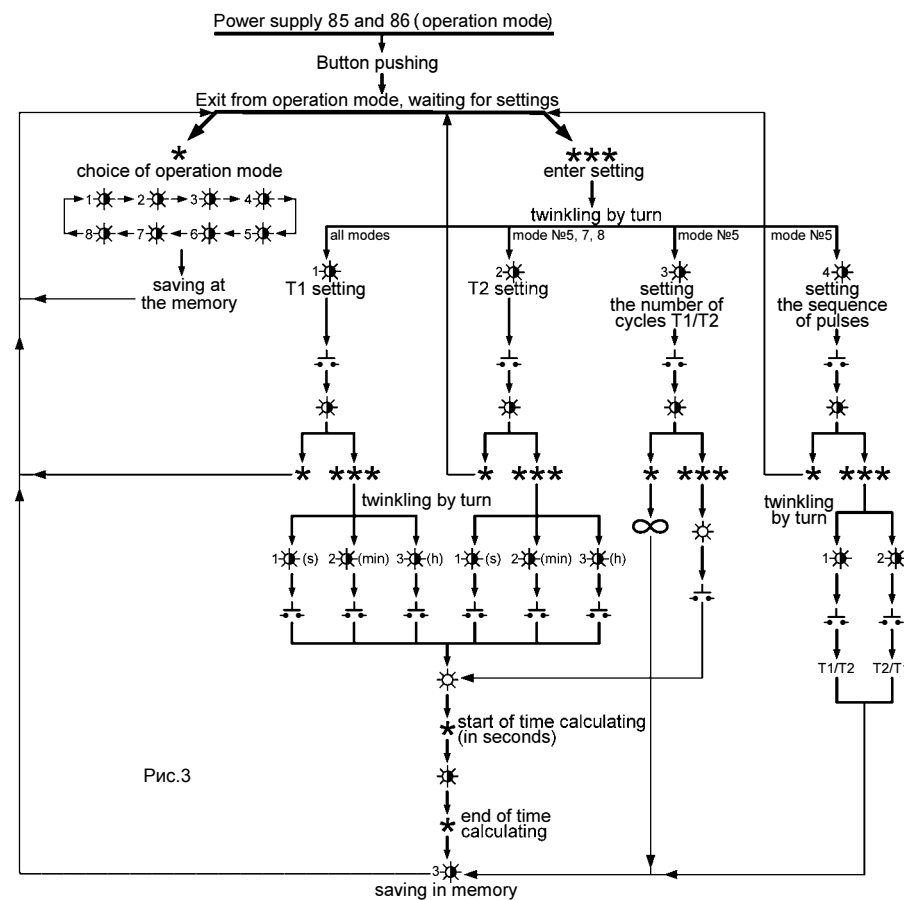


Рис.3